

1

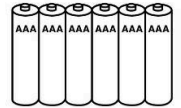
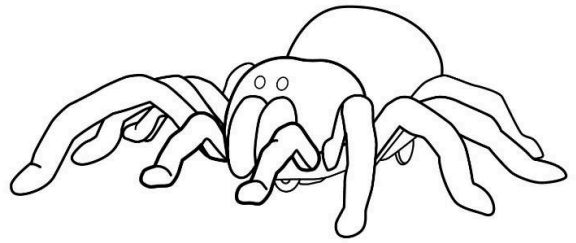
Table of Contents

- Section 1: Table of Contents
- Section 2: Component Checklist
- Section 3: Spider Features & Functions
- Section 4: Spider Battery Installation
- Section 5: Transmitter Battery Installation
Transmitter Features and Functions
- Section 6: Proper Use
Precautions and Care
- Section 7: Trouble Shooting & Support

REF-811 240220

2

Component Checklist

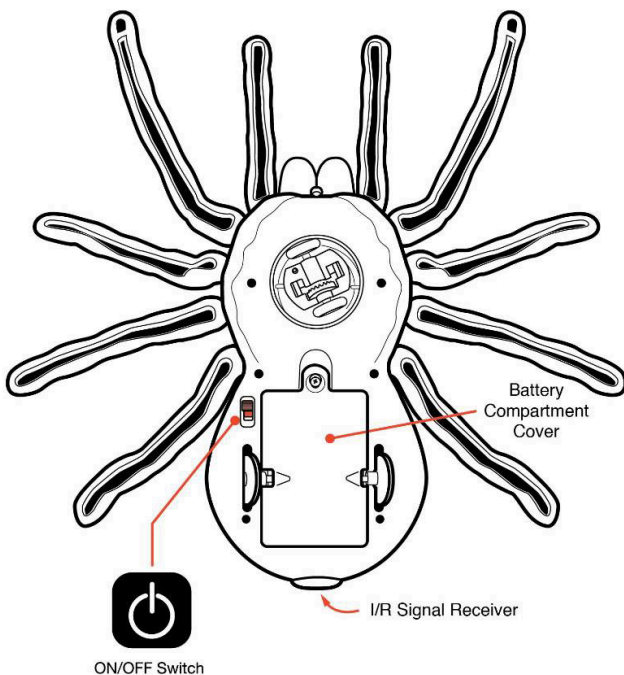


- (1) I/R Fuzzy Spider
- (1) Transmitter
- (6) AAA Batteries

Spider

3

Features and Functions

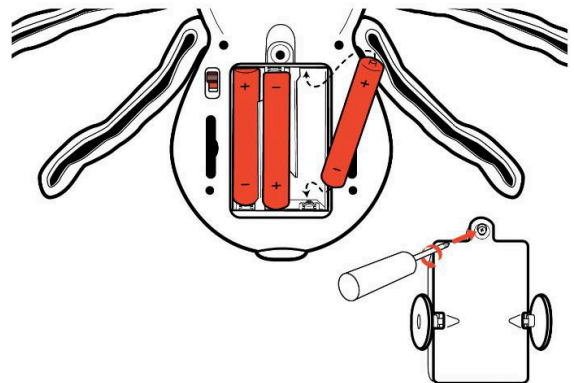


The ON/OFF Switch controls the main power to the toy. To save battery life, always remember to put ON/OFF switch in the OFF position when not in use.

Spider

4

Battery Installation



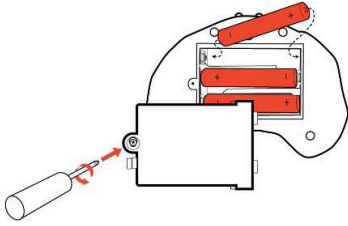
Note: When replacing batteries:
Use alkaline batteries only.
Do not mix old and new batteries.
Do not mix alkaline, standard or rechargeable batteries.

1. Locate the ON/OFF switch on the under-side of the spider.
2. Turn the ON/OFF switch to the "OFF" position.
3. Using a screwdriver, remove screw with battery compartment cover.
4. Insert 3 fresh "AAA" batteries, with positive (+) and negative (-) ends correctly matching the compartment markings.
5. Replace battery compartment cover with screw.

Transmitter

5

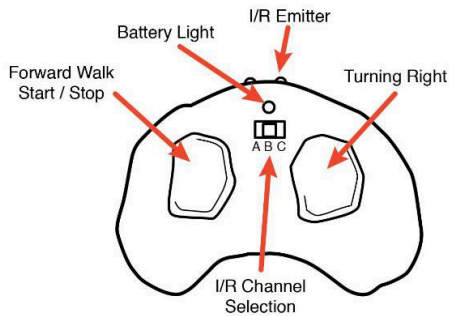
Battery Installation



1. Locate the battery compartment cover at the back of controller. Remove screw. Open cover.
2. Insert 3 fresh "AAA" batteries, with positive (+) and negative (-) ends correctly matching the compartment markings.
3. Replace battery compartment cover with screw.

Note: When replacing Transmitter batteries:
Use alkaline batteries only.
Do not mix old and new batteries.
Do not mix alkaline, standard or rechargeable batteries.

Features and Functions



- Select A, B or C Channel to find the correct frequency that works in your area.
- For walking, press walk button once. To stop walking, press walk button again. Spider will continue to walk forward until the stop walking button is pressed.
- Spider's eyes light up and glow red when is powered ON.

NEW BRIGHT

OWNER'S MANUAL

Please read and understand all precautions prior to use.
Thank you for choosing a premium New Bright product.



Scan to activate your warranty and receive important support information for your product.

scan me



USA & Canada
30-Day Limited Warranty

New Bright Industries warrants to the original purchaser that this product will be free of defects in materials and workmanship for thirty (30) days from the date of purchase. In the event of such defect within the warranty period, New Bright will repair or replace the product at our sole discretion. This warranty does not cover damage resulting from unauthorized modifications, accident, misuse or abuse.

Should your item have a defect covered under this warranty, first call the toll free number listed below. Most problems can be resolved in this manner. If necessary, you will be issued a Return Authorization number (RA) and instructions on how to obtain a Product Return Form. The Product Return Form is to be used when returning a product to us (postage pre-paid and insured by the consumer).

When returning a defective product, please package the product, the Product Return Form and a copy of the dated sales receipt as proof of purchase. Be sure to mark the RA number on the Product Return Form. If the product is returned without a dated sales receipt, it will be excluded from coverage under this warranty. Please allow 4 to 6 weeks for delivery of repaired or replacement vehicles (depending on your location).

New Bright Industries' liability for defects in materials and workmanship under this warranty shall be limited to repair or replacement at our sole discretion. In no event shall we be responsible for incidental, consequential or contingent damages (except in those states that do not allow this exclusion or limitation).

Valid only in the USA & Canada.

Contact New Bright Industries Customer Service Toll Free at:
1-877-NBI-TOYS
(1-877-624-8697)
Monday through Friday, 8:00 AM to 5:00 PM Eastern Time

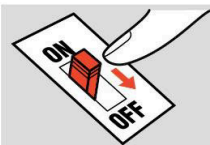
U.S. Toy Sales and Marketing Co., Inc.
30260 Oak Creek Drive - 2nd Floor
Livonia, MI 48333
1-877-624-8697
<http://www.newbright.com/>

JN011-24

Proper Use

6

Precautions and Care



Switch spider OFF when not in use.



Brush areas where dirt gets trapped.



Wipe body with a soft rag or tact cloth.



Do not use chemicals or water to clean.

Support

7

Trouble Shooting & Support

Problem - Spider does not move or moves slowly.

- Make certain there are fresh batteries in the transmitter and that they have been installed in the correct position.
- Are the (+) and (-) markings on the batteries in the same position as the (+) and (-) markings in the Transmitter Battery Compartment?
- Are the metal contact tabs touching, rusty or dirty in the transmitter?
- Make certain that the spider's ON/OFF switch is in the "ON" position.
- Make certain there is a line of sight between the spider and remote. I/R signal cannot travel through objects or walls.

BATTERY SAFETY INFORMATION

- Only batteries of the same or equivalent type as recommended are to be used.
- Batteries are to be inserted in position according to polarity.
- Dispose of batteries safely and correctly.
- Remove batteries if the toy will not be used for a long period of time.
- Exhausted batteries are to be removed from the toy.
- Non-rechargeable batteries are not to be recharged.
- Batteries should be replaced under adult supervision.

CAUTION:

Do not dispose batteries in fire. Leakage, explosion and personal injury may occur.

FCC CAUTION:

Changes or modifications not expressly approved by the party responsible for compliance could void the user's authority to operate the equipment.

This device complies with Part 15 of the FCC Rules. Operation is subject to the following two conditions:

- (1) this device may not cause harmful interference, and (2) this device must accept any interference received, including interference that may cause undesired operation.

NOTE: This equipment has been tested and found to comply with the limits for a Class B digital device, pursuant to Part 15 of the FCC Rules. These limits are designed to provide reasonable protection against harmful interference in a residential installation. This equipment generates, uses and can radiate radio frequency energy and, if not installed and used in accordance with the instructions, may cause harmful interference to radio communications. However, there is no guarantee that interference will not occur in a particular installation. If this equipment does cause harmful interference to radio or television reception, which can be determined by turning the equipment off and on, the user is encouraged to try to correct the interference by one or more of the following measures:

- Reorient or relocate the receiving antenna.
- Increase the separation between the equipment and receiver.
- Connect the equipment into an outlet on a circuit different from that to which the receiver is connected.
- Consult the dealer or an experienced radio/TV technician for help.