



BATTERY INSTALLATIONS AND OPERATING INSTRUCTIONS



Scan to activate your warranty and receive important support information for your product.

scan me

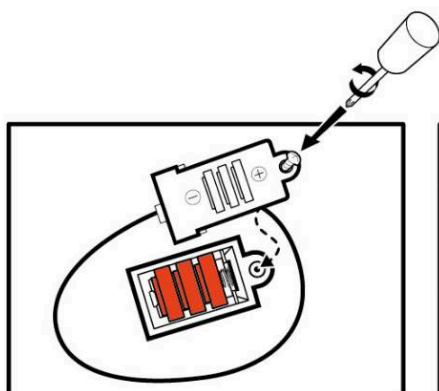


Diagram A

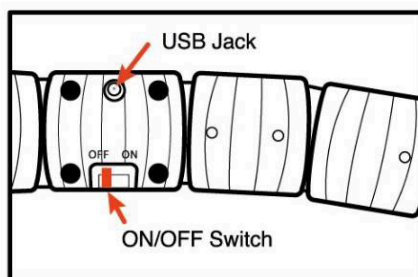


Diagram B

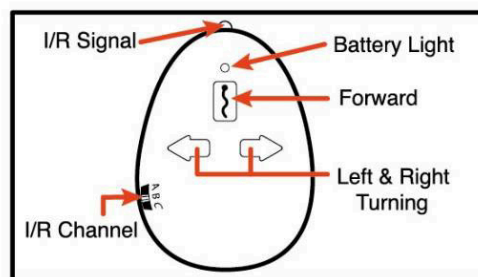


Diagram C

Battery Requirements:

3 1.5V LR44 batteries (included).

Controller Battery Instructions:

1. Locate and open the battery compartment cover at the back of controller. Remove screw and set aside.
2. Insert 3 fresh "LR44" batteries, with positive (+) and negative (-) ends correctly matching the compartment markings. See Diagram A.
3. Replace battery compartment cover. Replace screw.

Snake Charging Instructions:

1. Locate ON/OFF switch on the underside of the snake. Be certain the switch is in the OFF position.
2. Plug the narrow end of the supplied USB charging cord into the USB jack as shown below in Diagram B.
3. Plug the wide end of the USB cord into any powered 5V DC USB receptacle.
4. Full charge will take approximately 15-20 minutes.
5. Unplug cord and store in a safe place when charging is completed.
6. When charging, charge Status Light will glow red. Light will turn off when charging is complete.

To Play:

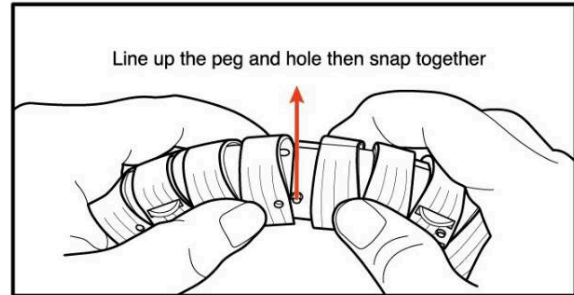
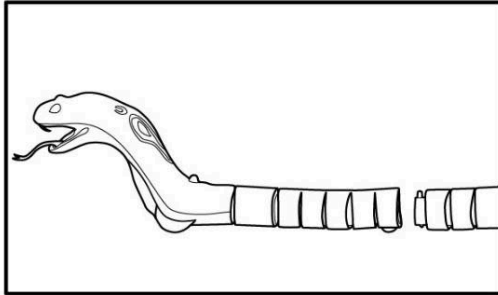
- Move the "ON/OFF" button on the underside of the snake to the "ON" position. See Diagram B.
- Press center 'snake' controller button for forward movement. Mouth lights up, tongue flickers. Press again will stop movement.
- Press left arrow button on controller to turn left.
- Press right arrow button on controller to turn right.
- Select A, B or C Channel to find the correct frequency that works in your area. See Diagram C.

Battery Safety Information:

- Only batteries of the same or equivalent type as recommended are to be used.
- Batteries are to be inserted in position according to polarity.
- Dispose of batteries safely and correctly.
- Remove batteries if the toy will not be used for a long period of time.
- Exhausted batteries are to be removed from the toy.
- Non-rechargeable batteries are not to be recharged.
- Batteries should be replaced under adult supervision.

For Best Results:

Do not mix old and new batteries.
Do not mix alkaline, standard or rechargeable batteries.
Use alkaline batteries only.



Attention:

If the snake body comes apart during play, simply snap back together as show. See above.

Caution:

Do not dispose batteries in fire. Leakage, explosion and personal injury may occur.
Do not recharge internal battery if snake is hot or warm to the touch. Allow battery to cool before recharging. Recharging a hot or warm battery will shorten the life of the unit.
Do not recharge the internal battery if it appears to be damaged or leaking.
Do not attempt to disassemble or remove internal battery.
Only an adult should charge batteries.
Do not attempt jumps or tricks with this snake.
Do not use included USB Cord for anything other than its intended purpose.
Choking hazard. Keep small batteries away from children.

The reception performance may be affected under a strong interference disturbance environment.

This product would not perform normally under a strong electrostatic environment.

F.C.C. CAUTION:

Changes or modifications not expressly approved by the party responsible for compliance could void the user's authority to operate the equipment.

This device complies with Part 15 of the FCC Rules. Operation is subject to the following two conditions:

(1) this device may not cause harmful interference, and (2) this device must accept any interference received, including interference that may cause undesired operation.

NOTE:

This equipment has been tested and found to comply with the limits for a Class B digital device, pursuant to Part 15 of the FCC Rules. These limits are designed to provide reasonable protection against harmful interference in a residential installation. This equipment generates, uses and can radiate radio frequency energy and, if not installed and used in accordance with the instructions, may cause harmful interference to radio communications. However, there is no guarantee that interference will not occur in a particular installation. If this equipment does cause harmful interference to radio or television reception, which can be determined by turning the equipment off and on, the user is encouraged to try to correct the interference by one or more of the following measures:

- Reorient or relocate the receiving antenna.
- Increase the separation between the equipment and receiver.
- Connect the equipment into an outlet on a circuit different from that to which the receiver is connected.
- Consult the dealer or an experienced radio/TV technician for help.

Contact New Bright Industries Customer Service Toll Free at:

1-877-NBI-TOYS

(1-877-624-8697)

Monday through Friday, 8:00 AM to 5:00 PM Eastern Time

U.S. Toy Sales and Marketing Co. Inc.

30260 Oak Creek Drive – 2nd Floor Wixom MI 48393

1-877-624-8697

<http://www.newbright.com/>